



Livelihood enhancement through transboundary natural resource management in the Limpopo corridor - Limpopo Transboundary Programme (LTP)

SAWMA Symposium
Hartenbos, Western Cape,
18-21 September 2011

Italian Cooperation support programme to the Great Limpopo Transfrontier Conservation Area

No borders in nature

- The environment is intrinsically integrated and interconnected



No borders in nature

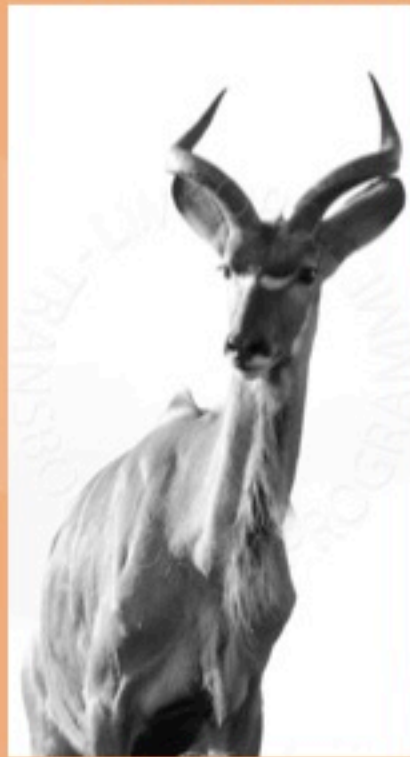
- Borders and artificial divisions does not apply to nature



Pafuri. The border between South Africa and Mozambique

No borders in nature

- Species does not use passport



This is not my passport picture!



The management reality of ecosystems

- Large ecosystems are divided by man made divisions
- Human history divided what in nature is united since ever

The management reality of ecosystems

- **National borders** separate policies and management practices of ecosystems



The management reality of ecosystems

- **Barriers among institutions** fragment and jeopardize policy and management implementation



The management reality of ecosystems

- **Heterogeneous interests** complicate interaction among stakeholders and the environment



Pafuri. Access to the Madimbo corridor

The management reality of ecosystems

- **Human activities** separate nature further more





The management reality of ecosystems

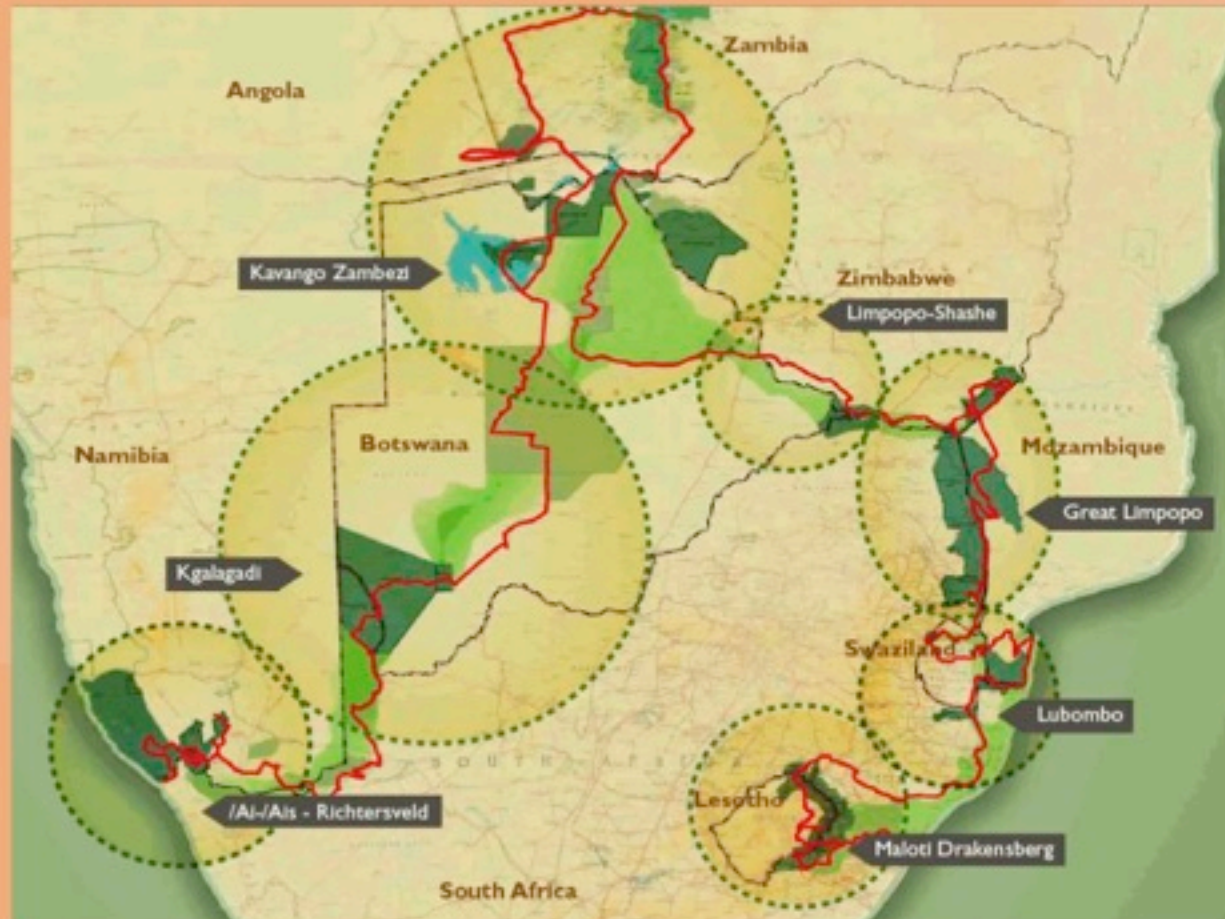
- Ecosystems are among the most complex systems we know
- Their management deals with social and economic expectations, competing interest, uncoordinated objectives and heterogeneous stakeholders



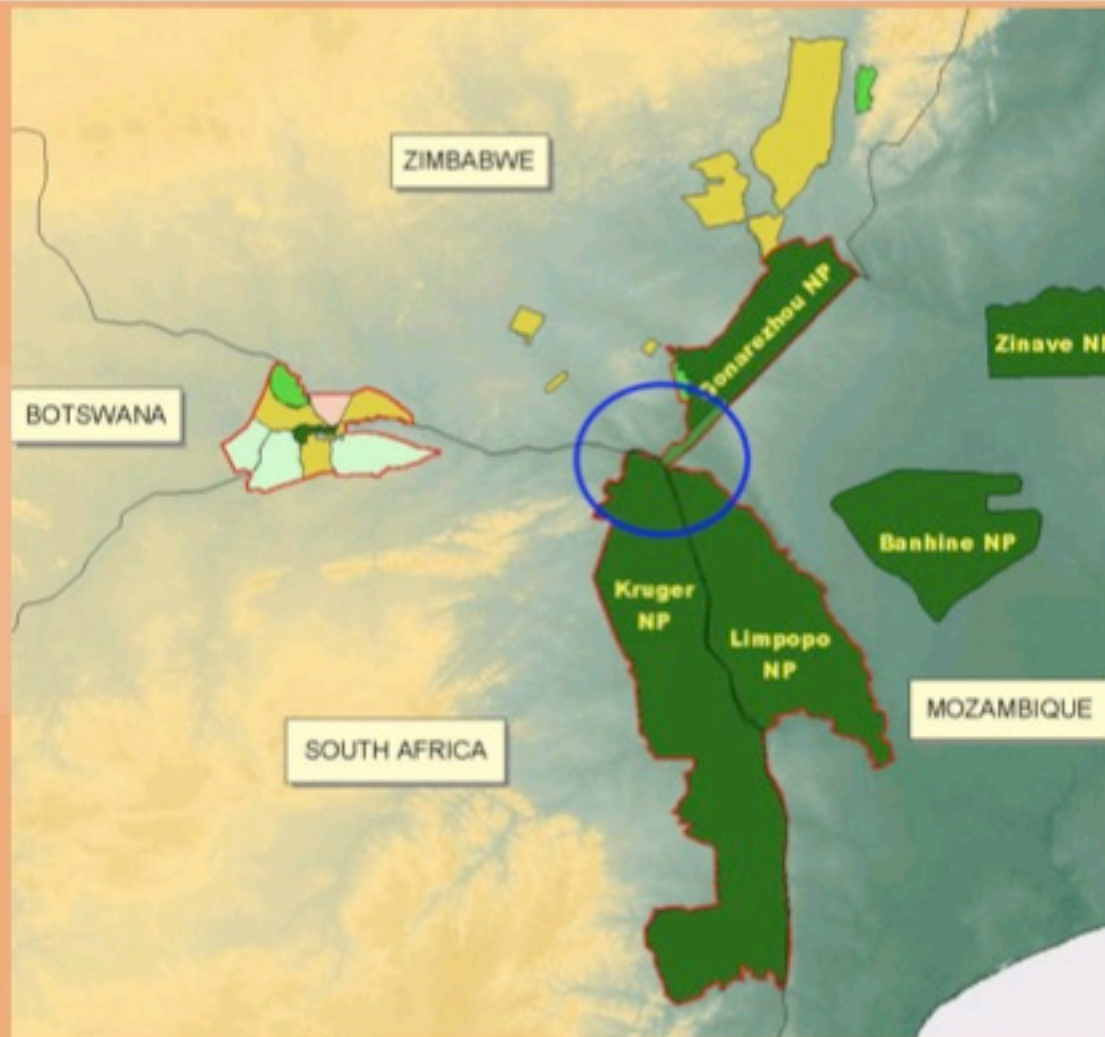
Transboundary parks – a response

- By instituting transboundary parks government decided to re-connect large ecosystems
- Bringing them under integrated management practices
- An unlocking the potential these area have to offer

Transboundary parks – Southern Africa



Where we work – GLTP





The LTP Italian Cooperation Programme

Limpopo Transboundary Programme (LTP)

- Donor: DGCS
- Implementing agency: IUCN
- Executing agency: CESVI



Issues

- Harmonizing and integrating policies
- Legal framework
- Regulations
- Resources: use access and protection
- Diverse management practices
- Stakeholders coordination
- Role of communities



The LTP Italian Cooperation Programme

improve the standard of living of people
adjacent to protected areas in the GLTFCA



Objectives

- Development of institutions and enabling policy for transboundary natural resource management
- Identify ecological, economic and social advantages of Transboundary Natural Resource Management
- Diversification and intensification of TBNRM production systems



Major challenges

- Regional and integrated management
- Involvement of a number of stakeholders
- Develop potential opportunities
- Active participation of communities

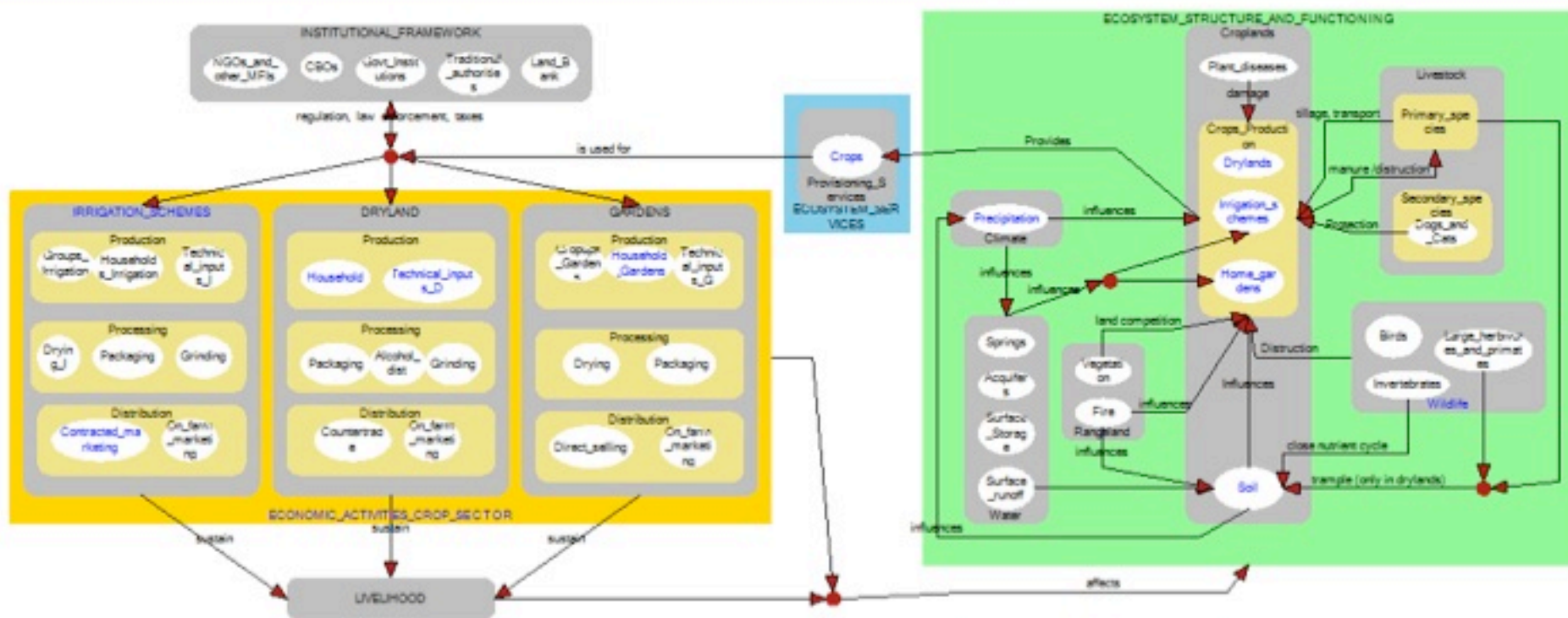
Improve management

- Managers across the three borders have a shared vision of the functioning of the ecosystem



System analysis

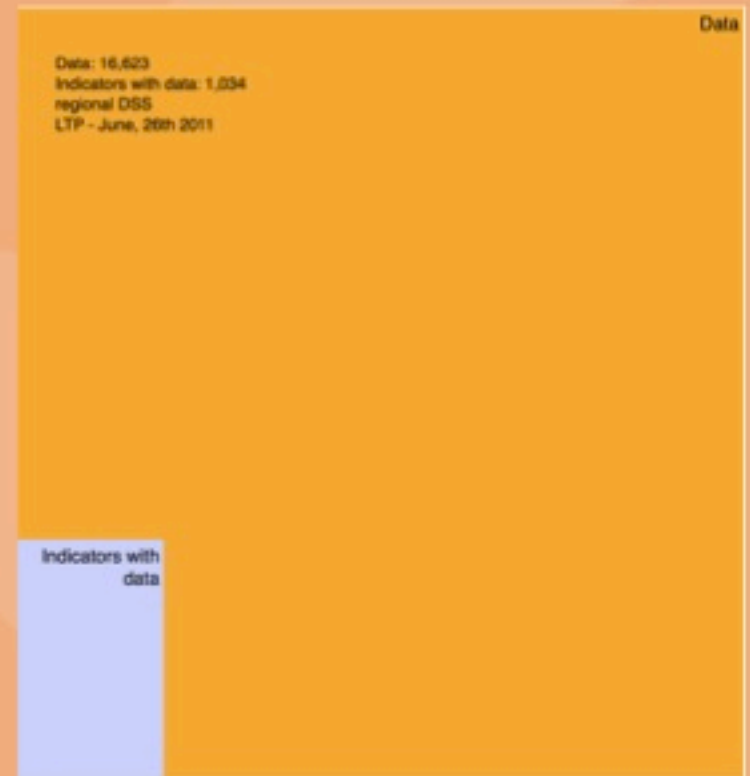
- Sharing of a common vision about the functioning of ecosystem services in this area





Incorporating data in management

- Data and information integrated in the decision making process
- Sharing of a centralized database

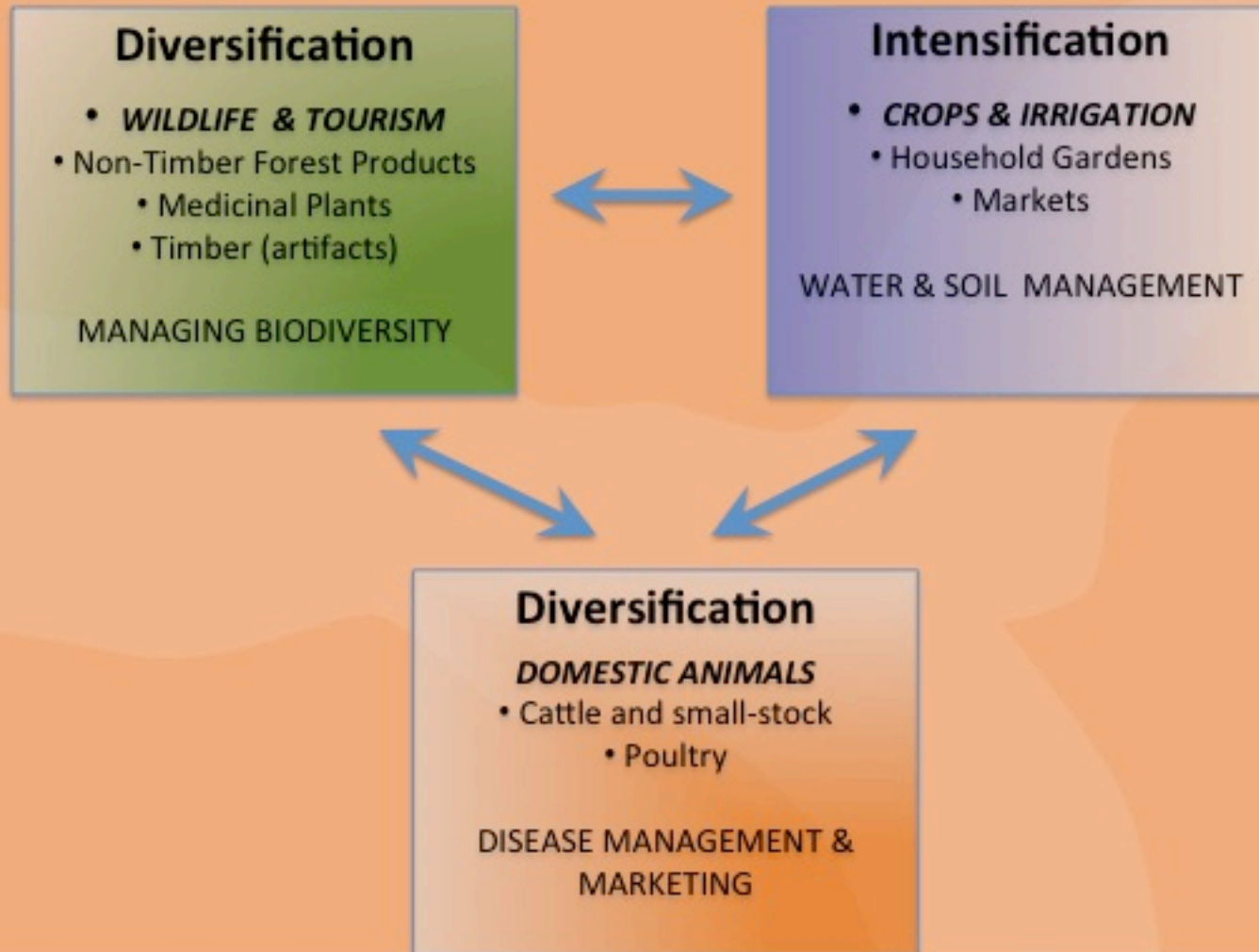




Unlocking potential and opportunities

- Evaluate potentials for TBNRM
- Develop community based activities to achieve livelihood opportunities

Unlocking potential and opportunities





License

This work is an open-access document distributed under the terms of the Creative Commons (www.creativecommons.org)

Attribution License, which permits unrestricted use, distribution, and reproduction in any medium, provided the original author and source are credited.

License: Attribution-Noncommercial-No Derivative Works 3.0 Unported.

Summary of the license can be found at:

<http://creativecommons.org/licenses/by-nc-nd/3.0>

Full license can be found at:

<http://creativecommons.org/licenses/by-nc-nd/3.0/legalcode>

