



The Contribution of the Biodiversity Stewardship Programme to Sustainable Landuse in Mpumalanga

Presenter: Nomcebo Malatjie

INTRODUCTION

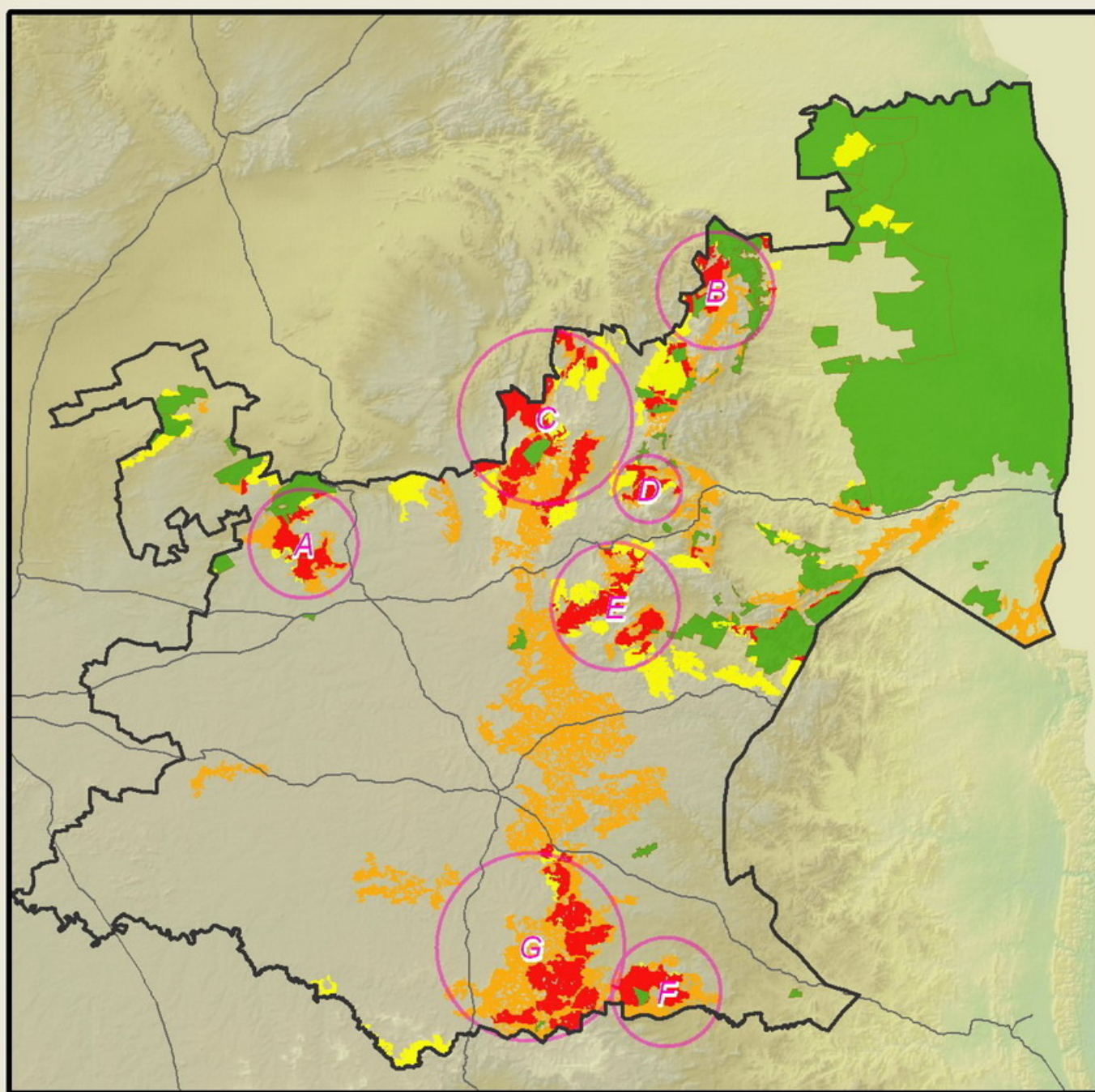
- Mpumalanga: under-represented network of protected areas.
- Many vegetation types – particularly grasslands - poorly protected.
- The grasslands biome is one of the most threatened biomes in South Africa, with 40% irreversibly transformed and only 1.9% of vegetation targets formally conserved.
- Grasslands provide essential ecosystems services necessary for economic development, but this very economic development threatens the grasslands

INTRODUCTION Cont.....

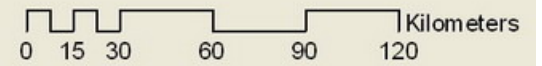
- Growing pressure on natural environment and increasing environmental degradation.
- Imperative to secure biodiversity within a PA Network.
- 20-yr Provincial Protected Area Expansion Strategy developed.
- Target driven and spatially defined (MBCP & MPAES).
- Biodiversity Stewardship is primary mechanism to expand protected areas.
- Supported in the implementation by DEA, SANBI, National Treasury, Provincial Environment dept's, conservation NGO's

TARGETS 2009 – 2012/13






| Biome | Five Year Target (hectares) | Target/Year | | | | |
|-------------------------------|--------------------------------|------------------|------------------|------------------|------------------|------------------|
| | | 1 (2009) | 2 (2010) | 3 (2011) | 4 (2012) | 5 (2013) |
| Grasslands Biome | 144 378.00 | 9 800 | 21 884 | 41 884 | 34 689.50 | 36 120.50 |
| Savanna Biome | 13 215.00 | 1 147.50 | 3 016 | 3 016 | 3 016 | 3 019.50 |
| Wetlands | 410.00 | 50 | 100 | 100 | 100 | 60 |
| Forests | 2.50 | 2.50 | - | - | - | - |
| TOTAL | 158 005.50 | 11 000.00 | 25 000.00 | 45 000.00 | 37 805.50 | 39 200.00 |
| Number of declarations | 225 | 16 | 35 | 64 | 54 | 56 |



MPAES Spatial Priority Areas



Legend

-  Protected Areas 2009
-  Summarised MPAES Priority
- MPAES**
-  Priority 1
-  Priority 2
-  Priority 3

BIODIVERSITY STEWARDSHIP

- Biodiversity stewardship aims to promote the conservation and sustainable management of resources outside of the traditional state-owned protected areas.
- It recognises landowners as **custodians** of their land, including the biodiversity and natural resources.
- It is a mechanism to ensure the wise use and management of the area through the form of voluntary legal agreements with private and communal landowners/users.

DEFINITION OF SUSTAINABILITY

- **Sustainability** is the capacity to endure. For humans, sustainability is the long-term maintenance of well being, which has environmental, economic, and social dimensions, and encompasses the concept of stewardship, the responsible management of resource use.
- “sustainable development is development that meets the needs of the present without compromising the ability of future generations to meet their own needs.

DEFINITION OF SUSTAINABILITY CONT.....



A diagram indicating the relationship between the three pillars of sustainability suggesting that both economy and society are constrained by environmental limits

DEFINITION OF SUSTAINABLE LAND USE

- Sustainable land use incorporates the notion of “sustainable development” and the concept of “sustainability” with a focus on natural resources and ecosystem functioning.
- Viable natural resources are vital for the maintenance of ecosystem functioning and when utilized as part of “land use”, need to be maintained and managed appropriately so that future use is ensured.
- This embodies the notion of “endurance” and applies not only to human future generations being able to use such resources but also the endurance of fauna and flora within such systems which by their sustained presence ensures the viability of such natural systems in the long term.

MAINSTREAMING BIODIVERSITY STEWARDSHIP INTO VARIOUS SECTORS

- The Grasslands Programme has chosen a strategic approach of mainstreaming biodiversity in the following production sectors: agriculture, forestry, coal mining and the urban economy in Gauteng.
- The main objective is that major production sectors are directly contributing to the achievement of biodiversity conservation priorities within the grasslands biome.
- The biodiversity and associated ecosystem services of the grasslands biome are sustained and secured for the benefit of current and future generations.

MAINSTREAMING BIODIVERSITY STEWARDSHIP INTO VARIOUS SECTORS

- The programme objective will be achieved through five programme outcomes:
 - **Outcome 1**-Enabling environment for biodiversity conservation in production landscapes is strengthened
 - **Outcome 2**-Grassland biodiversity conservation objectives mainstreamed into agriculture (BGMP)
 - **Outcome 3**-The forestry sector directly contributes to biodiversity conservation objectives in the grasslands biome
 - **Outcome 4**-Grassland biodiversity management objectives mainstreamed into urban economy in Gauteng
 - **Outcome 5**- Biodiversity management secured in coal

BIODIVERSITY STEWARDHIP V/S SUSTAINABLE LAND USE –LAND REFORM SITES

- Land restitution and land redistribution beneficiaries
- Beneficiaries benefit from extension support, access to agricultural resources and exposure to land management approaches in the land which they own.
- Primary focus for BS is biodiversity conservation and the securing of habitat to meet provincial targets
- Land redistribution-agrarian development/protected area expansion e.g. Wakkerstroom CPA's
- Conservation related industries e.g. game farming, ecotourism etc.- higher economic potential than regular agriculture activities such as stock farming

BIODIVERSITY STEWARDHIP V/S SUSTAINABLE LAND USE –COMMERCIAL FARMERS

- Formal declaration of Nature Reserves or Protected Environments under the NEMPAA.
- Landowners encouraged to work together towards common objective – conservation and farming.
- Technical support provided – ecological, grazing management systems which are compatible with biodiversity outcomes, burning programmes.
- Support provided by partners – e.g. NGO's, Working for Water, Working for Wetlands.
- Formal protection - mining not permitted and associated impacts thus avoided.

IMPORTANCE OF INTERGRATED MANAGEMENT PLAN (IMP)

- A comprehensive and implementable management plan (IMP) is vital for the realization of sustainable land use.
- Ensure compliance with the National Environmental Management: Protected Areas Act (No.57 of 2003).
- NR's and PE's are required to develop four year management plans.
- Designed to provide tools to assist landowners and protected area authorities in the strategic planning and management of their areas.
- Seek to influence and change some of the practices and behaviour of farmers in efforts to improve the compatibility of land use practices with biodiversity conservation.
- Management programmes within IMP, may include Alien Invasive Management, Grazing and Veld Management, Burning programme, Infrastructure, Security, Tourism.

SUCSESSES & CHALLENGES

Land Reform Beneficiaries

Challenges:

- Ensuring support from GOVT department,
- Basic needs to maintain farms i.e. fencing, fire fighting equipments etc
- Capacity within communities to implement management plans

Successes:

- Successful gaining of trust between the NGO officers and land owners,
- Partnership development with other organizations to work collectively towards conservation of natural resources

SUCSESSES & CHALLENGES cont....

Commercial Farmers

Challenges:

- Translation of Management Plan recommendations into simple APOs
- Modification of old management approaches to incorporate MP requirements

Successes:

- Declaration of first PE in Mpumalanga
- Comprehensive MP developed with all areas mapped
- Good landowner support
- APO development on track (simplified approach - one page

Funding and implementing partners



END

THANK YOU

